



AW3D Enhanced

Global Digital Elevation Model

NTT DATA

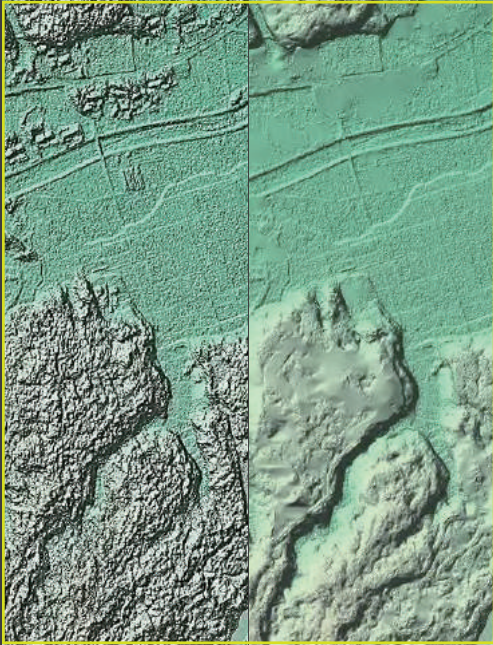


AW3D Enhanced DEM products are one of the world's highest resolution and the most accurate 3D digital map derived from satellite data. Our "Multiview Technology" enables us to process all possible and suitable pairs of high resolution imagery from 110+ PB of satellite data archive to generate best-in-class accurate DSM.

AW3D Enhanced data are optimal for any size of projects that require medium to large scale mapping geodata (up to 1/2,500 map equivalent).



AW3D Enhanced



0.5m DSM vs. 0.5m DTM - Fukushima, Japan

Thanks to its high resolution & quality, consistency, short turnaround time, scalable, extensive/flexible customization and superior user support, AW3D product family has been chosen as the worlds' best satellite-based geodata.

AW3D has been used in 130+ countries and in more than 2,000 projects, helping to meet needs for wires network planning, AEC projects, disaster management, environmental simulation, and security/intelligence communities.

AW3D Enhanced DSM/DTM is suitable for a project that requires precise, accurate, and homogeneous geodata over the target area of interest.

Please contact our sales representative for feasibility study, sample request, and any other inquiries.



www.aw3d.jp/en

| Specification | | |
|--------------------------------|---|--|
| Product Type | Digital Surface Model (DSM) Digital Terrain Model (DTM) | “DSM + DTM” bundle discount is available |
| Spatial Resolution | 2m, 1m, 0.5m (native) | |
| Coverage | Worldwide (on demand) | Feasibility study is required before order |
| Data Type | 32-bit float | File format: 32-bit GeoTIFF (*.TIF) and others |
| Horizontal Accuracy (absolute) | 1m RMSE / 1.5m CE90 (with GCP) 2m RMSE / 3m CE90 (without GCP) | Global average, local deviations occur |
| Vertical Accuracy (absolute) | 1m RMSE / 1.5m LE90 (with GCP) 2m RMSE / 3m LE90 (without GCP) | Global average, local deviations occur |
| Supported CRSs | Geographic (Lat/Long) Universal Transverse Mercator (UTM) | |
| Elevation Datum | Orthometric elevation (EGM2008) Ellipsoidal elevation (WGS84) | |
| Minimum Order Size | DSM: 25+ km ² per area | Minimum AOI width: 2 km or wider |
| Options | Ortho-image (30 – 50cm) Contour lines | New tasking is available per request |
| Delivery Method | Online download (web/FTP) | |



NTT DATA

NTT DATA Corporation
www.nttdata.com
aw3d@kits.nttdata.co.jp



Remote Sensing Technology Center of Japan
www.restec.or.jp
data@restec.or.jp