



AW3D Newsletter Vol.1

January 18, 2019

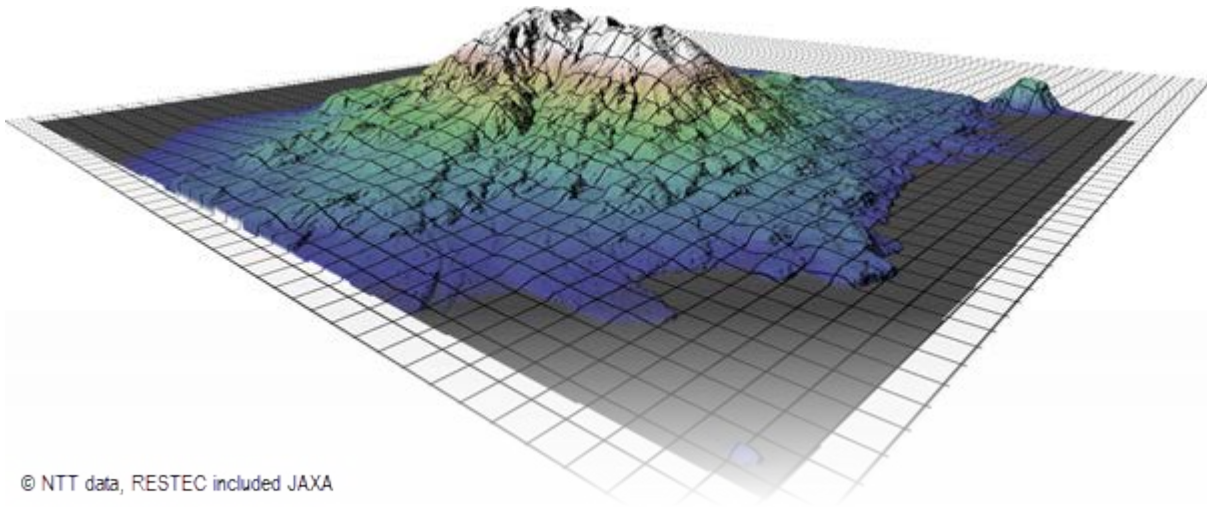
Hi everyone,

As all of you probably know, this is our very first issue that has been sent to our supporters, like you. We'd like to share product knowledge, coming events, and so on through this email newsletter.

Hope you enjoy it.

- AW3D sales team

3D Map of the Month - Q: can you tell which mountain is this?
(please find the answer at the bottom of this message)



© NTT data, RESTEC included JAXA

Feature Topic: DEM, and DSM / DTM

It's known that "DEM" stands for "Digital Elevation Model", "DSM" is for "Digital Surface Model", and "DTM" is for "Digital Terrain Model."

In this sense, DEM can be meant as either DSM or DTM.

However, some people use "DEM" as digital terrain model, and that could cause confusions.

Since the impact from difference between DSM and DTM is significant in high resolution data, AW3D team prefers not to use a term "DEM" to avoid ambiguity.

Product of the Month: AW3D Standard

AW3D Standard is the world's highest resolution global DEM. More than 3 million satellite images are processed to generate the most comprehensive high-resolution digital 3D world map available today. read more on [AW3D Standard product site ...](#)

Take advantage of a Special Limited-Time Offer

Receive a 15% discount for academic/educational users. This special offers is only available until January 31, 2019.

Some rules and restrictions may apply. Read more on [here \(PDF\)](#).

3D Map of the Month

(refer the image at the top of the page)

A: [Sakurajima](#) (literally "Cherry blossom Island" in Japanese), is one of the most famous active volcanoes, located in the southern part of Japanese islands. (the elevation of the peak is 1,117 meter above sea level) To understand its unique topology, 5m resolution AW3D Standard will be the best product in terms of accuracy, level of details, and affordability. Request this sample from [AW3D Sample Request page ...](#)

© AW3D Sales Team - All rights reserved.