



September 27, 2019

Dear colleague,

About 8 months ago, we released our first AW3D newsletter. This is our 9th issue, and we try to keep improving and striving to make our communication better and greater through this media. I hope you will enjoy reading this latest article.  
-AW3D sales team

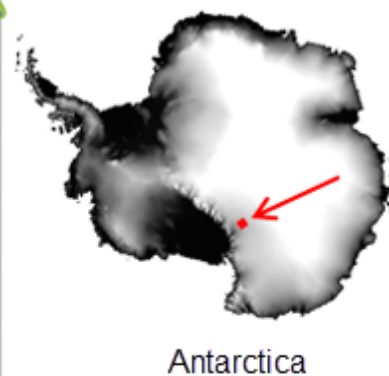
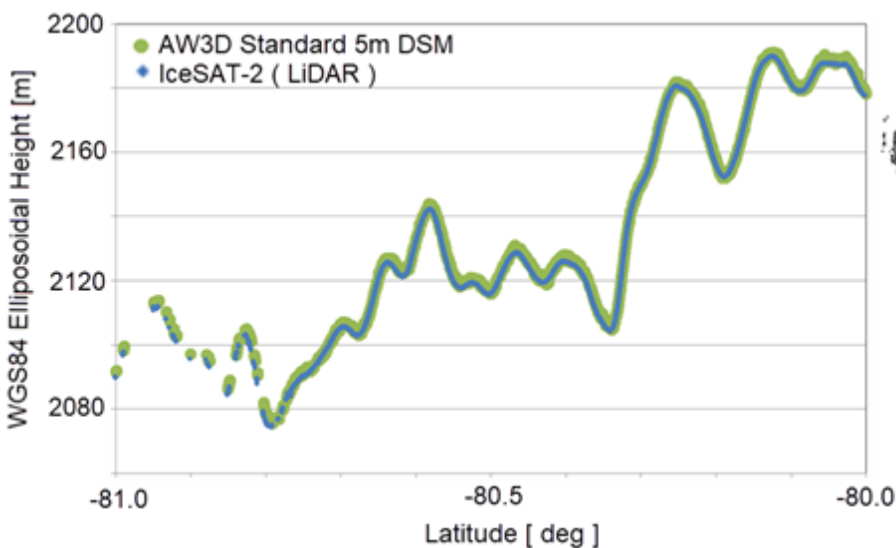
-----  
**Feature Topic: Evaluating AW3D accuracy against IceSAT-2**

As is well known, evaluating DEM accuracy can be tricky, since it may vary from location to location for enormous obvious and unknown factors. In this article, we are presenting our evaluation result of AW3D Standard 5m DSM against IceSAT-2, which observatory contains a laser altimeter called ATLAS (Advanced Topographic Laser Altimeter System). We compare height data between AW3D and a product of IceSAT-2 (Land Ice height ATL06). The profile of both measurement extremely well matched each other. The standard deviation (STD) of errors (difference between IceSAT-2 and AW3D) is **less than 0.8m**.

This result implies that the AW3D has a superior performance on extreme terrain such as a large ice-sheet.

We will continue to perform these validation activities for the better quality and accuracy of our global data products.

(Please contact us to obtain the full detailed version of this report)



Antarctica

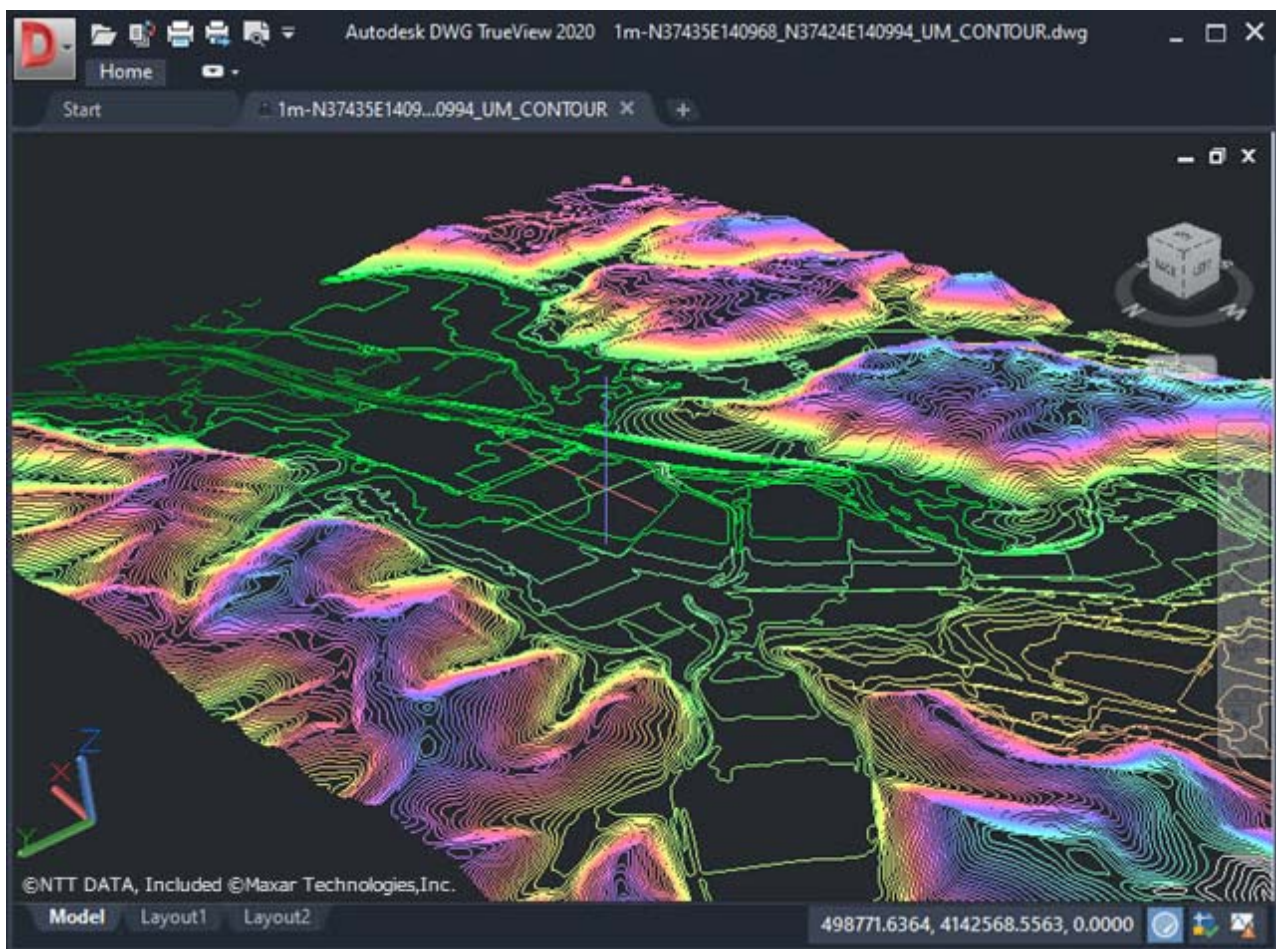
---

### Product of the Month: Contour option

Contour lines have been used to describe the three-dimensional ground topography of the target site on a two-dimensional map. This format is especially useful to make the data interoperable among not only GIS software but also other industry specific software such as CAD packages. Contour lines can be ordered as an option for an AW3D DTM product. You can specify the contour interval and the file format (ESRI shape, DWG, DXF etc.).

The screen capture was taken with a free DWG viewer from Autodesk (AW3D TrueView) with contour lines from one of our samples - AW3D Enhanced 0.5m DTM of Fukushima, Japan.

Please ask for a free sample to drive our contour line samples on your own environment.



-----  
**Upcoming events of AW3D:**

We would like to inform you about the following exhibitions where we will be showcasing our extensive range of products, solutions, and services.

We look forward to welcoming you and discussing any requirements you may have and to introduce you to our sale teams.

1. Esri Russia & CIS User Conference

Duration: From Tuesday 22 to Thursday 24 October 2019

Location: DoubleTree By Hilton Marina, Moscow, Russia

(Note: visit "Remote Sensing Technology Center of Japan/RESTEC" booth)

2. Autodesk University LAS VEGAS 2019

Duration: From Tuesday 19 to Thursday 21 November 2019

Location: Sands Convention Center, Las Vegas, U.S.

Booth: INF122 (Infrastructure Design Quad)

3. GeoSmart India

Duration: From Tuesday 3 to Thursday 5 December 2019

Location: HICC, Hyderabad, India

Booth: 35

(Note: visit "Remote Sensing Technology Center of Japan/RESTEC" booth)

© AW3D Sales Team - All rights reserved.