



December 19, 2019

Welcome to your AW3D newsletter. We're excited to share the latest news, tips, and resources for geolocation specialists.

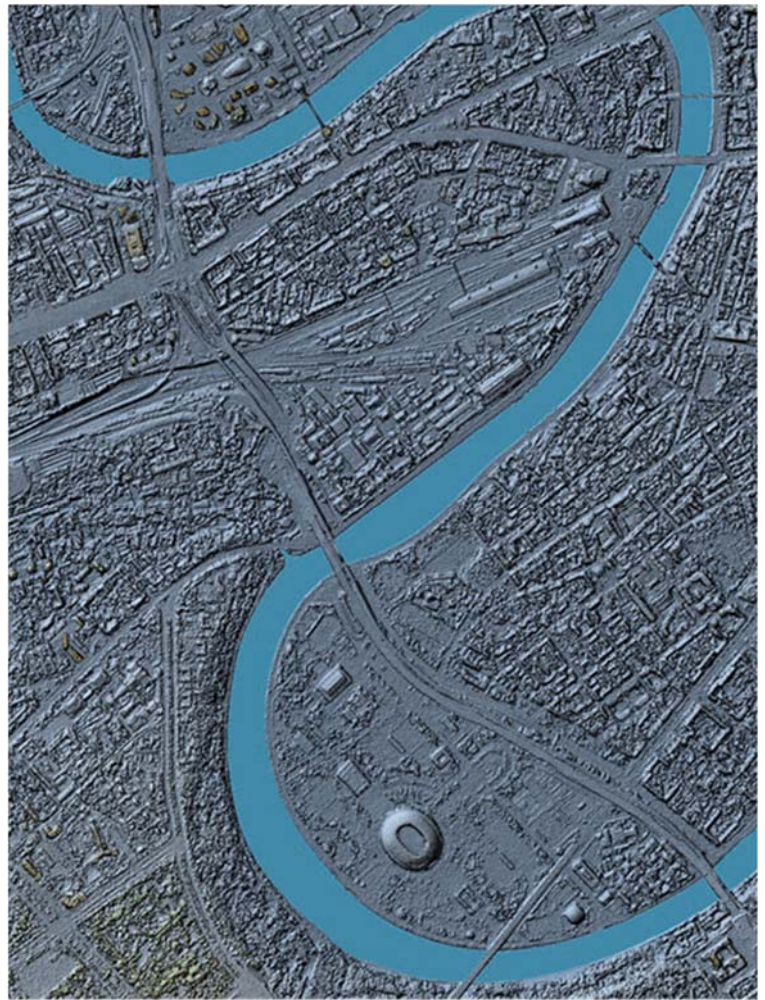
Thanks for reading.

DEM of the Month: Moscow, Russian Federation

As you all know, there's no boundary and limitation for satellite-based remote sensing. You can order geospatial data regardless of country and region through AW3D team.

The following model is rendered from AW3D Enhanced 50cm DSM. Thanks to our unique multi-view technology, details like railroad structures, bridges, vegetation, and building are well captured - and reproducing fine details of the ground features means that we will be able to produce a better DTM by removing them nicely.

We are more than happy to provide some free samples if you are interested in our ultra-high resolution DEM products. ([link](#) is shown below)



©NTT DATA, Included ©Maxar Technologies, Inc.

Feature Topic: data interoperability with Computer Aided Design (CAD) products

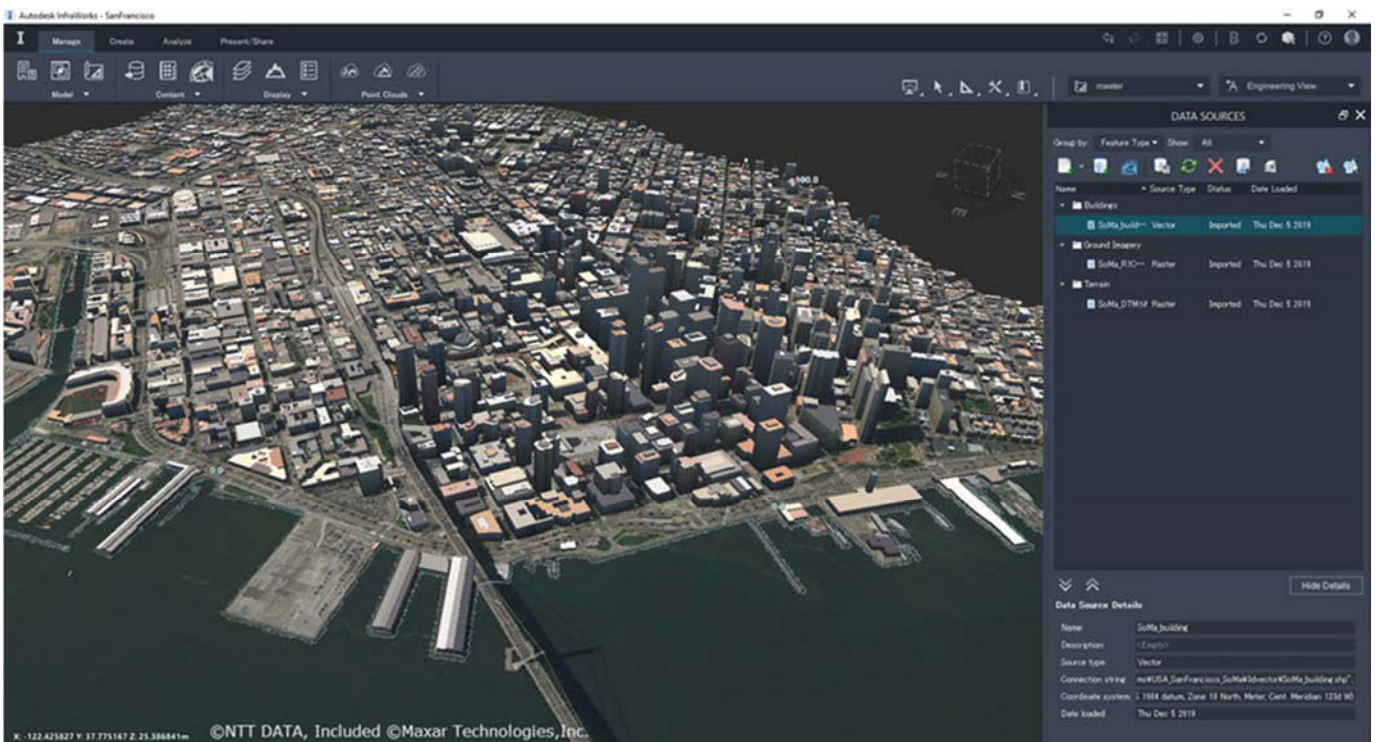
Our products are fully compatible with not only major GIS software but also with industrial standard CAD packages. This means that civil infrastructure engineers and other stakeholders can directly consume our data in their design, simulation, and visualization environments.

The following screen capture was taken with Infracore from Autodesk. You can directly drag & drop GeoTIFF files that describe the terrain (DTM) and imagery (Pan-Sharpned Satellite images) to the screen canvas. They will be recognized as the terrain and surface image and automatically generate a photo-realistic 3D model. You can drop 3D building data (Esri shape file) as well, then all you need to do is opening the configure dialog then set

- type = Buildings
- Roof height = AGL m

With a couple of clicks, you can bring a whole set of satellite-based 3D geo-data into your design environment.

If you are interested in a sample dataset of 3D building data like this example, please visit the following link to contact us: <https://www.aw3d.jp/en/sampleform/>



Special Promotion

AW3D sales team is pleased to inform you that we offer special limited-time discount off of selected products listed below:

<https://www.aw3d.jp/en/news/201911/001772/>

AW3D Standard 2.5m Level-2 DSM & Level-3 DTM

We offer 2.5m products at the same unit cost of 5m product:

*AW3D Standard Level-2 DSM:

500 JPY/km² (400 km² - 9,999 km²)
250 JPY/km² (10,000 km² or larger)

*AW3D Standard Level-3 DTM:

3,000 JPY/km² (100 km² - 399 km²)
1,500 JPY/km² (400 km² - 9,999 km²)
500 JPY/km² (10,000 km² or larger)

AW3D Enhanced 0.5m Level-2 DSM & Level-3 DTM

We relax the minimum order size and offer a fixed price:

- * 10km² of AW3D Enhanced 0.5m DSM for 100,000 JPY
- * 5km² of AW3D Enhanced 0.5m DTM for 100,000 JPY

This promotion will apply to the order that is made between November 1st and December 27th. Since December is one of our busiest seasons to process orders, please contact us as early as possible to avoid delayed delivery.

We are also offering a special large scale volume discount for an AOI that size is 100,000 km² or larger of AW3D Standard 2.5m / 5m DEM products (ask us for more details).

Please take advantage of this opportunity to try out our latest products.

A New Year Holiday Schedule

Our office will be closed on the following period:

28th, December (Sat), 2019 - 5th, January (Sun) 2020

We will respond to your inquiry on 6th January 2020 or later.

Thank you very much for all your support in 2019. Wishing you a fun-filled holiday season and best wishes for a happy New Year!

Thanks for turning in,
The AW3D sales team



© AW3D Sales Team - All rights reserved.

Other company names and product names appearing on this message are the trademarks and registered trademarks of their respective companies. They are not necessarily displayed with the ((R), TM) trademark symbols.

This email was sent from an unmonitored mailbox. If you wish to unsubscribe or change your email address, please click [here](#). Your privacy is important to us. See [our statement of privacy \(PDF\)](#) to learn how to protect your information.