

Dear 3D Fans,

We hope this newsletter finds you well.
All of our AW3D team members always wish your safety and health.

In Japan, a government announced the lifting of the state of emergency end of May.
We've been working under "the new normal" to resume business operations while taking the highest priority on the safety and health of our members.

This issue features projects with the World Health Organization and the World Bank we have worked on in the past.

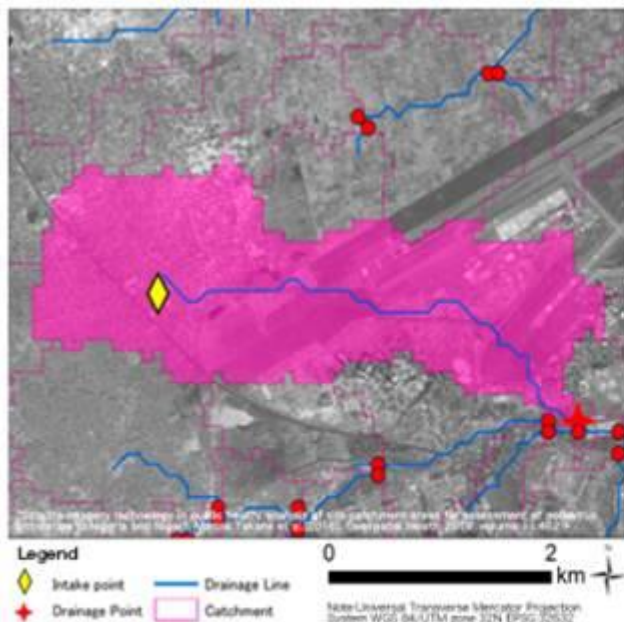
Hope you enjoy the article.

Feature Topic: AW3D's contribution to SDGs and the strength of a satellite

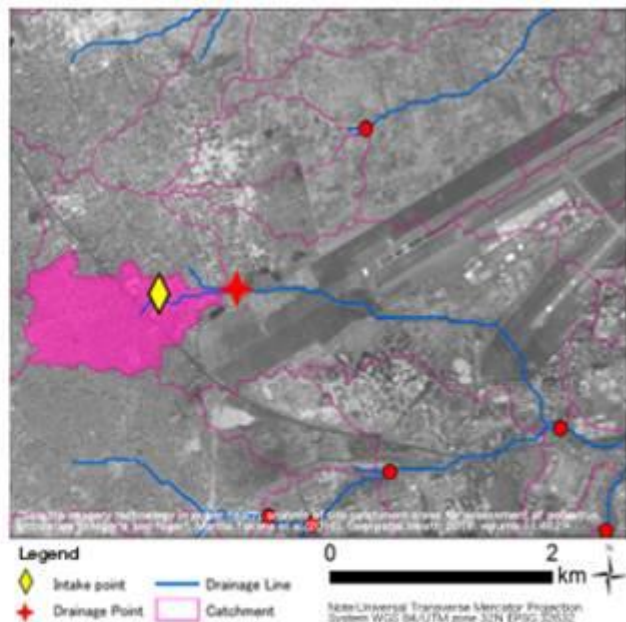
According to the World Health Organization (WHO), the highly contagious COVID-19 can be transmitted when hands touch infected people or contaminated objects and surfaces.

The most effective way we can do to prevent the spread of the disease is hand-washing frequently.

The contagious disease may sound that it is not related to AW3D.
However, the WHO identified the poliovirus infection route via sewage drainage in Nigeria and Niger based on the results of an AW3D analysis.



Existing analysis result with 30m resolution imagery



Same area using AW3D (5m resolution)

Image: Comparison of analysis results using 30m resolution and AW3D (5m resolution)

Like this case, AW3D has been contributing to the achievement of the SDGs, which has been coming up a lot nowadays.

For example, to develop solutions to a wide range of challenges, including disaster preparedness and in the domain of public health, containment of epidemics, particularly in the developing nations of Africa and Asia.

Recently, the World Bank used our data to evaluate urban space growth after the implementation of roads they have developed.

They used two different periods of AW3D dataset for their urban transport projects in India and Mozambique

to analyze the development of urban space before and after the implementation WITHOUT visiting the site.

This ability to compare the different periods of the data is one of the advantages of using satellite imagery.



Image: Comparison of two different periods utilizing AW3D 50cm resolution Ortho imagery

Even under the current difficult situation, there are high expectations for earth observation satellites to collect information without visiting the site.

We want to support you in various fields based on our achievements we have made, so please feel free to contact us.

You can find our AW3D case studies at our website.

<https://www.aw3d.jp/en/casestudy/>

Events: AW3D at ESRI User Conference

Date: July 13-15, 2020

Location: Virtual (V193)

ESRI UC URL: <https://www.esri.com/en-us/about/events/uc/overview>

AW3D Sales Teams will be presenting at the world's largest virtual GIS event in July.

Please find our virtual sale booth via searching “RESTEC.” We will also host several webinar sessions describes below:

To join the webinar, please access to the following link(s) that you are interested in participating to register.

13-July (MON): 1:30pm PDT-San Diego

Beijing-CST- July/14 (Tue) 4:30 am
Brasilia-BRT- July/13 (Mon) 5:30 pm
London-BST- July/13 (Mon) 9:30 pm
Moscow-MSK- July/13 (Mon) 11:30 pm

Topic:

[AW3D global coverage 2.5m Digital Surface Model and more \(15min\)](#)

14-July (TUE)

Part 1. 8:00am PDT-San Diego

Beijing-CST- July/15 (Wed) 11:00 pm
Brasilia-BRT- July/14 (Tue) 12:00 pm
London-BST- July/14 (Tue) 4:00 pm
Moscow-MSK- July/14 (Tue) 6:00 pm

Topic:

[AW3D -satellite based 3D building data for smart city\(20 min\)](#)

Part 2. 1:30pm PDT-San Diego

Beijing-CST- July/15 (Wed) 4:30 am
Brasilia-BRT- July/14 (Tue) 5:30 pm
London-BST- July/14 (Tue) 9:30 pm
Moscow-MSK- July/14 (Tue) 11:30 pm

Topic:

[AW3D Telecom dataset for 5G planning \(20 min\)](#)

15-July (WED)

Part 1. 8:00am PDT-San Diego

Beijing-CST- July/15 (Wed) 11:00 pm
Brasilia-BRT- July/14 (Tue) 12:00 pm
London-BST- July/14 (Tue) 4:00 pm
Moscow-MSK- July/14 (Tue) 6:00 pm

Topic:

[AW3D - world's best accurate satellite based 0.5m DSM/DTM \(15min\)](#)

Part 2. 1:30pm PDT-San Diego

Beijing-CST- July/15 (Wed) 4:30 am
Brasilia-BRT- July/14 (Tue) 5:30 pm
London-BST- July/14 (Tue) 9:30 pm
Moscow-MSK- July/14 (Tue) 11:30 pm

Topic:

[AW3D for mining site exploration and development \(20 min\)](#)

Please take this opportunity to get the latest news of AW3D!



© AW3D Sales Team - All rights reserved.