



March 29, 2021

Dear AW3D Supporters,

Welcome to our latest newsletter!

March is the last fiscal year in Japan.

We will continue to do our best to provide you with valuable information through this newsletter in FY21.

In this issue, we would like to share some of our latest case studies relating to port development projects and invite you to our upcoming webinar in April.

3D Map of the Month



AW3D Building + Ortho over Tokyo, Japan ©NTT DATA included ©Maxar Technologies, Inc.

The image above is displayed Autodesk InfraWorks. AW3D data can be used in a variety of design software such as in InfraWorks, Civil 3D, and Auto CAD. Also, it diverse industrial standard formats, including GeoTIFF, Esri Shape, and DWG/DXF.

Please [contact us](#) if you are interested in our 3D building samples or/and the current off-the-shelf coverage.

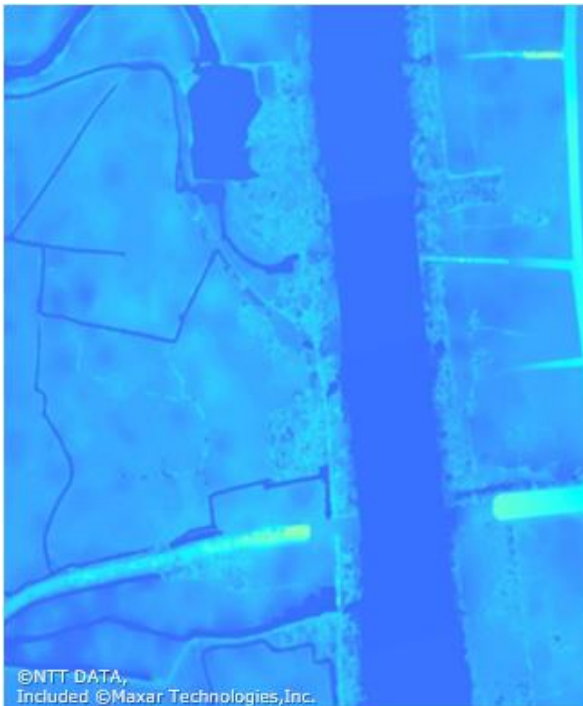
Case Study: Port Development Project - Bangladesh

In the preparatory survey for the port development project in Bangladesh, AW3D was selected because of its elevation accuracy and delivery certainty.

This is the project with Oriental Consultants, a major international engineering consulting firm headquartered in Japan, for their feasibility study of a port development project in Matabari, Bangladesh. During the schematic design phase of a port access road, the client planned to carry out a field survey for route selection, soil volume calculations, and length calculation from buildings.

It is not always easy to obtain high-quality 3D maps of foreign project sites, and generally a field surveying takes a longer timeline and also includes a risk of uncertain timing of delivery caused by unexpected situation/accident. AW3D ensured to deliver 0.5m DTM for 500 sq.km in 1.5 months which is 1/3 time compared to a field surveying. Thanks to this, the project was completed successfully on schedule.

In this way, AW3D has been able to contribute globally to the project of architecture, engineering, and construction application in minimizing the time and uncertain risk of a field survey. This is valuable, particularly in these difficult times. The use of satellite-based 3D data allows us to understand the conditions without interrupting business.



AW3D Enhanced DTM (0.5m) ©NTTDATA included ©Maxar Technologies, Inc.

Announcement of our Webinar Session



Theme: Preliminary Design, Costing & Feasibility of Corridors Using Satellite-derived DEM data for road construction projects

Date/Time: April 8, 2021 at 2:00 - 2:30 pm PDT

Location: Webinar

We are thrilled to announce that we will have a collaborative webinar with Softree Technical Systems, a leading civil design software provider in Canada.

The webinar will cover AW3D products, the user perspective of AW3D, and demos using the road design software.

Please join the 30min webinar to learn how AW3D helps engineering projects globally.

To join the webinar, please access the following link that you are interested in participating in to register.

<https://register.gotowebinar.com/register/86429723653602060>



© AW3D sales team – all rights reserved.

This email was sent from an unmonitored mailbox. If you wish to unsubscribe or change your email address, please click [here](#).

Your privacy is important to us. See [our statement of privacy \(PDF\)](#) to learn how to protect your information.