



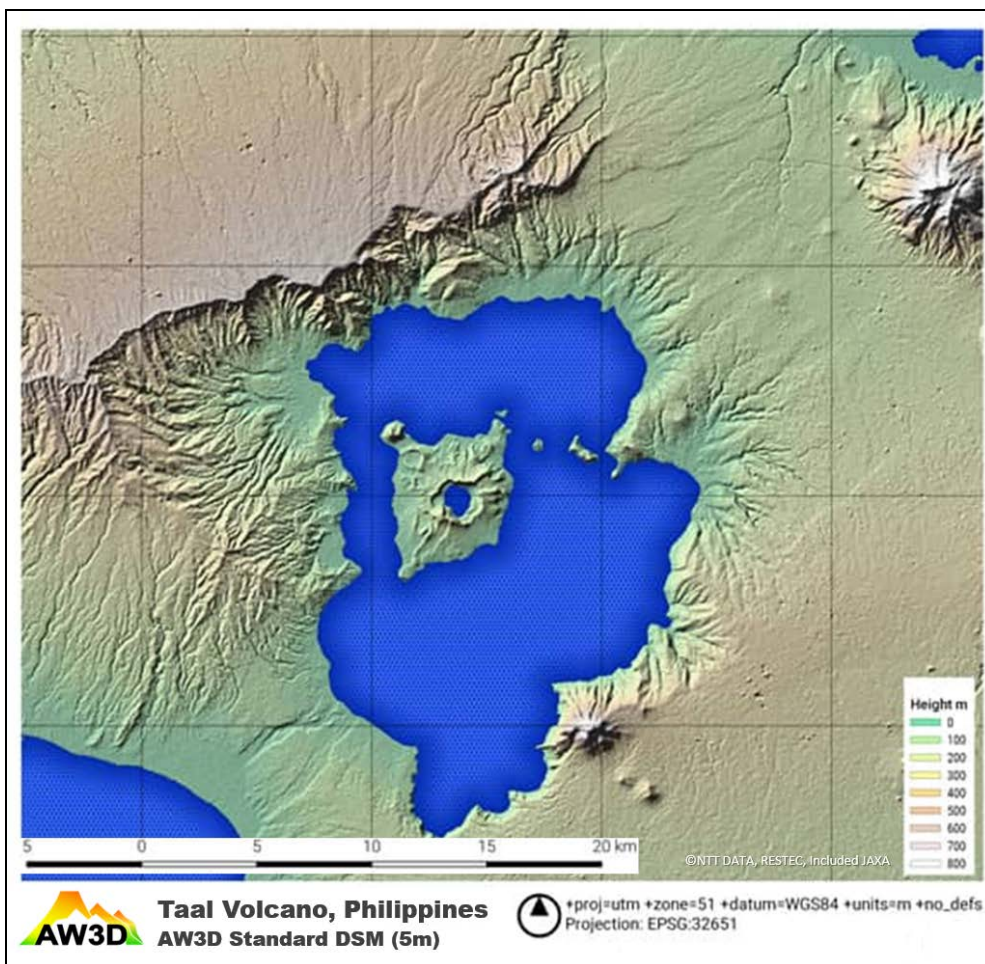
AW3D Newsletter Vol.30

September 21st, 2021

Welcome to your AW3D newsletter. We're excited to share the latest news, tips, and resource for geospatial data specialists. In this issue, we take a look at applications with volcanoes, as well as GCP correction services.

Thanks for reading,
-AW3D sales team

DEM of the Month: Taal volcano, Philippines - located about 50km south of Manila



Featured Topic of the Month: Volcanoes

It is hard to argue that one of the most terrifying natural disasters is volcanic eruptions. Some geologists claim that there are around 1,500 active volcanoes across the globe, and people who happen to live close to them need in-depth and detailed disaster management plans.

AW3D Standard DEM, best-in-class satellite-based global off-the-shelf digital elevation model data, is ideal for preliminary examination of hazardous areas without direct access, thanks to the wide coverage and affordable price. With AW3D Enhanced DEM, an on-demand production product, you can narrow down the vintage of the source imagery to generate a DEM of before/after a specific event*1.

We can also offer a free GCP correction*2 to achieve high accuracy for detailed risk mitigation plans.

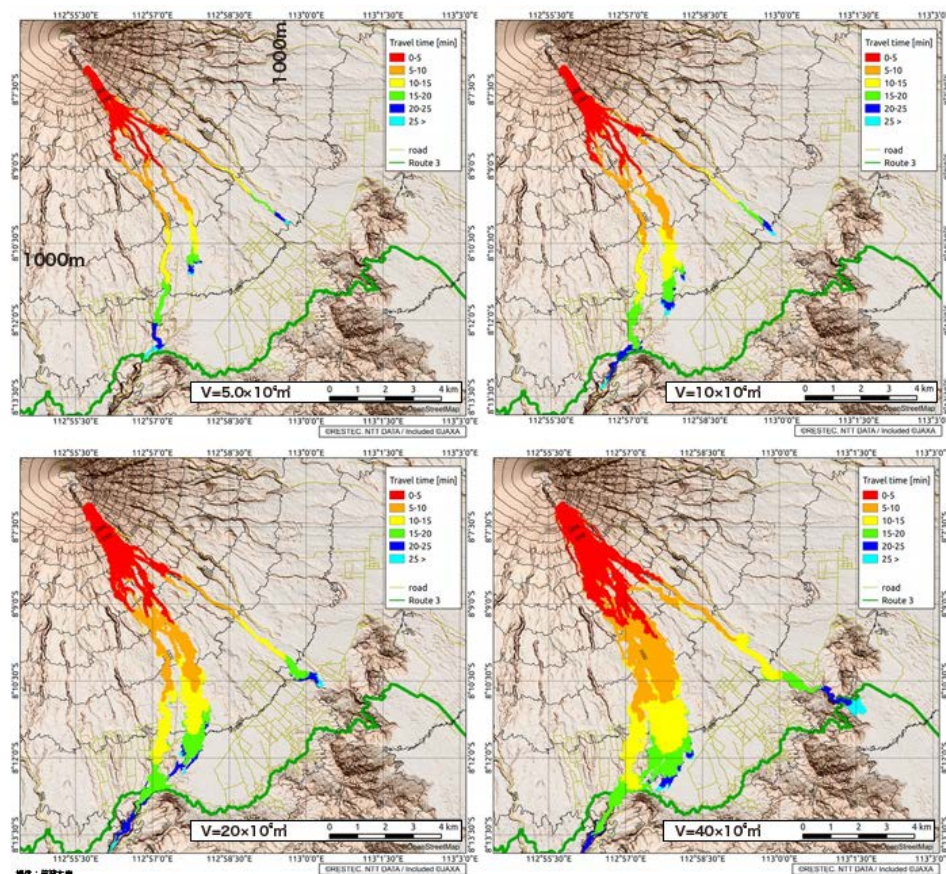
If you are interested in our data, services & product, or samples, please contact us from [this URL](#):

*1 when there is a sufficient number of vintage imagery stacks.

*2 see the “Service of the Month” below

You can also find an actual example of volcanic pyroclastic flow on our website as a case study.

Visit - <https://www.aw3d.jp/en/casestudy/case10/>



Case Study: Semeru Volcano, Simulation of the Pyroclastic Flow

Service of the Month: GCP correction

Ground Control Point (GCP) is a type of geographic data used to rectify a geodata.

It's a set of identifiable points in the image and its ground coordinate, and can be obtained from many different kinds of sources including GNSS surveying.

Unlike most other satellite-based Digital Elevation Model products, we offer GCP correction at free of charge.*3

GCP correction would be a crucial option to obtain ultra-high accurate 3D data. In fact, we have provided it for many AEC-related projects (AEC: Architecture, Engineering, and Construction) where people need up to 1/2500 scale map equivalent accuracy.

Feel free to contact us from [this URL](#) if you would like to know more about this option.

We can examine your GCP data/format to see whether they can be used in our process chain or not.



*3 only available for AW3D Enhanced DEM - some other restriction may apply

Any questions, comments, or suggestions are always welcome.

We can be reached via [here](#).

Thanks for tuning in,

The AW3D sales team



© AW3D Sales Team - All rights reserved.

Other company names and product names appearing on this message are the trademarks and registered trademarks of their respective companies. They are not necessarily displayed with the ((R), TM) trademark symbols.

This email was sent from an unmonitored mailbox. If you wish to unsubscribe or change your email address, please click [here](#).

Your privacy is important to us. See [our statement of privacy \(PDF\)](#) to learn how to protect your information.