

The most comprehensive 2D+3D base map

A wide range of data types, including up-to-date orthorectified imagery as well as 3D raster and vector data, are available to support various needs. Land use/land cover data (DLU) and digital height model (DHM) are also provided for telecom and other applications.

Off-the-shelf dataset ready to go

All data of Nationwide 3D Base Map have been processed, verified, void-infilled, and error-corrected to support unmatched short lead time. They are provided in industrial-standard formats so that you can directly adapt them to virtually any professional solution.

Users

- ✓ Academia (universities, research institutes)
- ✓ Mobile network operators and network equipment vendors
- ✓ Federal/Central Government
- ✓ Railroad operators
- ✓ Smart city planners
- ✓ Insurance related firms

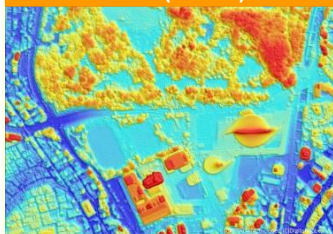
Typical use cases

- ✓ RF simulation and wireless network design & planning
- ✓ Long distance wireless communication design
- ✓ Large scale disaster mitigation and management
- ✓ Smart city planning, including wide area green space optimization
- ✓ Environmental Simulations
- ✓ Flight simulator
- ✓ Line-of-site analysis

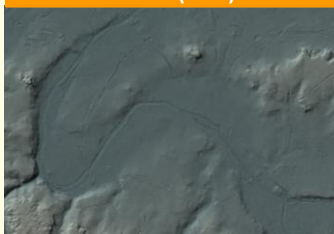
Available data layers

Bi-annual update

DSM (0.5m)



DTM (5m)



Ortho (30cm)



Building

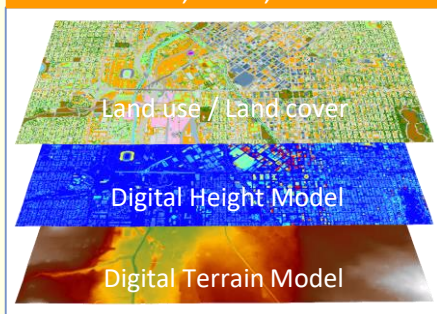


Value added package product for telecom

3D vector



DTM, DHM, DLU



Product Specifications

AW3D Enhanced DSM, DTM

Product layer	AW3D Enhanced DSM, DTM
Resolution	DSM: 0.5m, DTM: 5m
Coverage	Entire Japan
Horizontal accuracy	1.75m RMSE
Vertical accuracy	1m RMSE
Update cycle	Bi-annual update (plan)

AW3D Building

Product layer	3D Vector
Coverage	90% population coverage (approx. 100,000km ²)
Horizontal accuracy	1.75m RMSE
Vertical accuracy	2m RMSE
Update cycle	Bi-annual update (plan)

AW3D Ortho

Product layer	AW3D Ortho
Resolution	30cm
Coverage	Entire Japan
Horizontal accuracy	1.75m RMSE
Update cycle	Bi-annual update (plan)

Value added package product for telecom

	3D vector (building/vegetation/bridge)	DHM/DLU/DTM (5m)	DLU/DTM (20m)
Coverage	Capital cities	Capital cities	Other area
Horizontal accuracy	5m RMSE	5m RMSE	20m RMSE
Vertical accuracy	1-2m RMSE	5m RMSE	10m RMSE
Vintage	2020	2020	2019 - 2020



www.aw3d.jp/en

NTT DATA

NTT DATA Corporation
www.nttdata.com
aw3d@kits.nttdata.co.jp



Remote Sensing Technology Center of Japan
www.restec.or.jp
data@restec.or.jp

Product specifications and schedule are subject to change without notice.
 Ver1.0_Feb-03- 3, 2022 ©2022 NTT DATA Corporation, RESTEC