

Off-the-shelf data solution

All data of the Great Britain and Northern Ireland 3D Base Maps have been processed, verified, void-infilled, and error-corrected to support unmatched short lead time. They are provided in industrial-standard formats so that you can directly adapt them to virtually any professional solution.

Seamless, uniform, and consistent

The 3D Base Map has been proven practical and cost-effective through many successful projects thanks to its homogeneity. Our best-in-class manufacturing process chain ensures that you will enjoy reliable high-quality data of a given target area without unwanted gaps and seams.

Users

- ✓ Mobile network operators and network equipment vendors
- ✓ Federal/Central Government
- ✓ Local Government (law enforcement, first responders)
- ✓ Utility companies (water/gas/electricity)
- ✓ Railroad operators
- ✓ Smart city planners
- ✓ Insurance related firms
- ✓ Academia (universities, research institutes)

Typical use cases

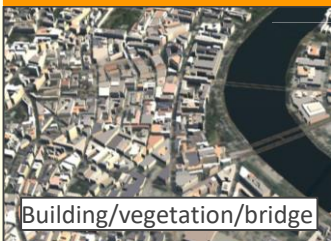
- ✓ RF simulation and wireless network design & planning
- ✓ Long distance wireless communication design
- ✓ Large scale disaster mitigation and management
- ✓ Smart city planning, including wide area green space optimization
- ✓ Environmental Simulations
- ✓ Flight simulator
- ✓ Line-of-site analysis

High-resolution 3D map for urban areas

All Cities/towns >30,000 population

>50% population coverage

3D vectors



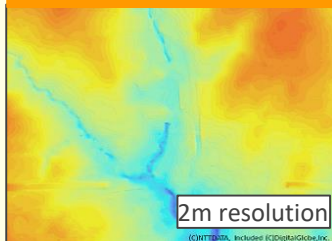
Land use / Land cover



Digital Height Model



DTM



Middle-resolution 3D map for entire Great Britain and Northern Ireland

Entire landmass coverage

Land use / Land cover



Digital Height Model



Digital Terrain Model



10m resolution



Product Specifications

High-resolution 3D map for urban areas

Product layer	3D Vector, DHM / DLU / DTM
Raster resolution	2m
Coverage	See the table above
3D vector layers	Building / vegetation / bridge
DLU classes	25 classes
Horizontal accuracy	2m RMSE
Vertical accuracy	1m - 2m RMSE
Vintage	Greater London: 2020 – 2021, Others: Mainly 2018

Middle-resolution 3D map for entire Great Britain and Northern Ireland

Product layer	DLU / DTM (10m)
Resolution	10m
Coverage	The Great Britain and Northern Ireland
DLU classes	26 classes
Horizontal accuracy	10m RMSE
Vertical accuracy	10m RMSE
Vintage	Mainly 2018

Cities/towns that High-resolution 3D maps are available

1	Aberdeen	11	Edinburgh	21	Newcastle Upon Tyne
2	Belfast	12	Glasgow	22	Northampton
3	Birmingham	13	Kingston Upon Hull	23	Norwich
4	Bradford	14	Leeds	24	Nottingham
5	Brighton	15	Leicester	25	Oxford
6	Bristol	16	Liverpool	26	Sheffield
7	Cambridge/Milton	17	London (Greater London)	27	Slough
8	Cardiff	18	Luton		
9	Coventry	19	Manchester		
10	Derby	20	Milton Keynes		

In 2022, it is planned to be covered 300+ cities/towns that have more than 30,000 population. It covers more than 50% population in the Great Britain and Northern Ireland.



www.aw3d.jp/en

NTT DATA

NTT DATA Corporation
www.nttdata.com
 aw3d@kits.nttdata.co.jp



Remote Sensing Technology Center of Japan
www.restec.or.jp
 data@restec.or.jp

Product specifications and schedule are subject to change without notice.
 Ver1.0_Feb-03-3, 2022 ©2022 NTT DATA Corporation, RESTEC