

June 21st, 2022

Welcome to the latest edition of the AW3D newsletter.

We're excited to share the latest news, tips, and resource for Geo-Information experts.

Thanks for reading.

-AW3D sales team

---

## **AW3D News:**

### **AW3D Team will be at Autodesk University 2022 in New Orleans**



Sami HARADA, a senior specialist from AW3D team, will host a class during the [Autodesk University 2022](#) in New Orleans, U.S. (27-29 September).

His proposal for the class has been selected alongside more than 2,200 submitted proposals!

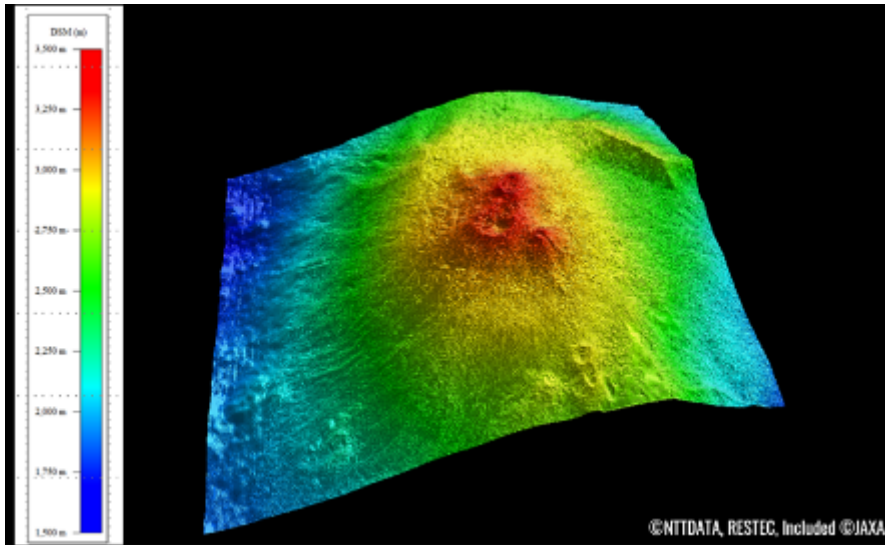
Class Description: [Leveraging Artificial Satellite Data in High-Low Mix Design Environment](#)

\*You might need an Autodesk account (free registration) to access these links above.

We will keep you updated on the event through this newsletter, social media, and our website, so stay connected with us!

---

## 3D Map of the Month: Mount Etna, Italy (AW3D Standard 5m DSM)



The image above is Mount Etna, an active and the highest volcano in Europe, shown in [Global Mapper](#) by Blue Marble Geographics.

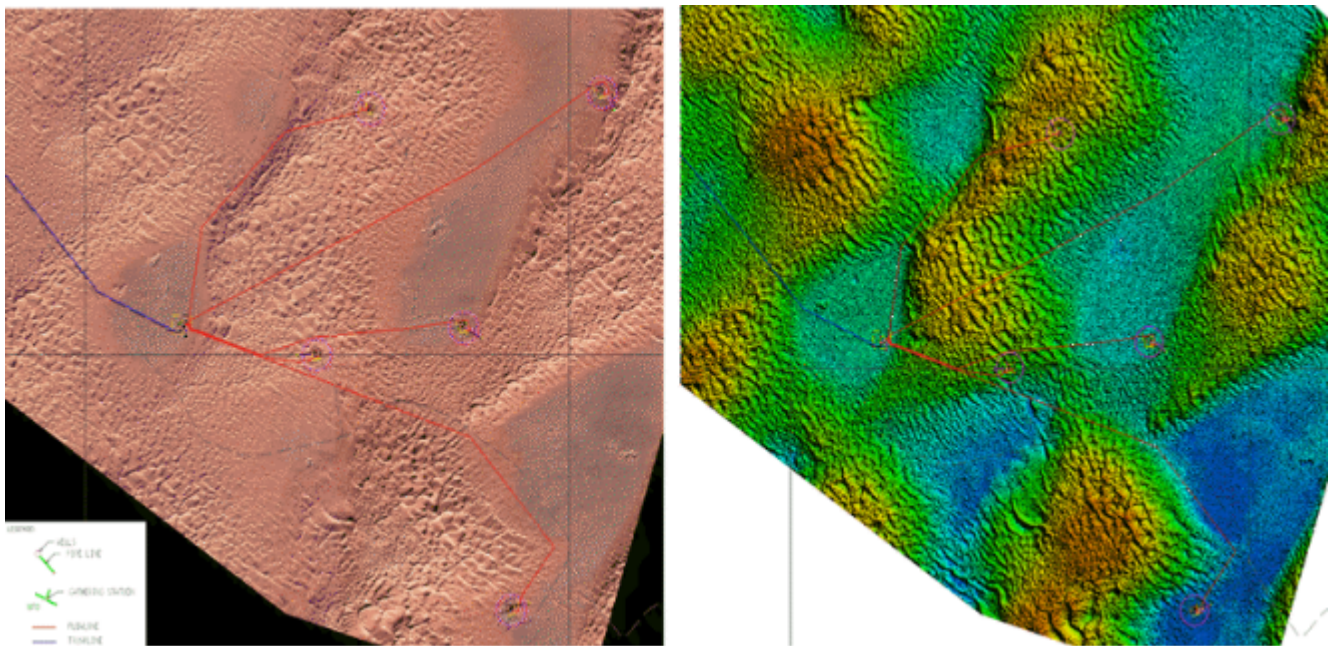
AW3D products come in industry-standard formats that are compatible with major GIS software such as DWG, DFX, SHP, OBJ, STL, CSV, etc.

Do not hesitate to get in touch with us if you want to know our data supports your software environment.

---

### Case Study:

#### Pipeline Routing Selection in the Grand Erg Desert, Algeria



(Left) AW3D 50cm Ortho (Right) AW3D Enhanced 1m DTM (©NTT DATA, Included ©Maxar Technologies, Inc.)

#### Gathering Network of the Selected Pipeline Routing

We're excited to share the latest case study from JGC Algeria S.p.A ("JGC"), one of the biggest oil and energy companies in Algeria and North Africa, leveraged AW3D products to optimize the pipeline ROW.

## What They Used:

- AW3D Enhanced DTM (1m) with GCP correction in GeoTIFF & CSV
- AW3D Ortho (50cm/color 4-band) in GeoTIFF
- 1m contour line in SHP & CSV (provided by AW3D team)

## Reasons to Use GIS Data:

The use of GIS data was chosen by JGC rather than the classic topographical survey on site to cope with the project's tight schedule and the particularity of the geographical area in the middle of the Grand Erg Desert with 3 different remote locations (total area size was approx. 2,500 sq.km).

## Why AW3D:

AW3D products were selected due to the high resolution, accuracy of its product and the reasonable delivery schedule within the overall project milestones. Indeed, all requested products were delivered in 6 weeks from the date of placing an order as they committed in advance.

## Customer Feedback:

AW3D products were used effectively during the project lifecycle in dealing with various changes (e.g., the change in wellhead location requires rerouting the pipe and generating a new alignment sheet) which has enabled immediate decisions to be taken and saved additional time and costs compared to the traditional topographical survey.

Find more case studies in different applications at our [website](#).

Please contact our sales team if our DEM data can be leveraged in your coming project. Any questions, comments, or suggestions are always welcome. We can be reached here.

Thanks for tuning in.

---



© AW3D sales team – all rights reserved.

This email was sent from an unmonitored mailbox. If you wish to unsubscribe or change your email address, please

click [here](#). Your privacy is important to us. [See our statement of privacy \(PDF\)](#) to learn how to protect your information.