

August 25<sup>th</sup>, 2022

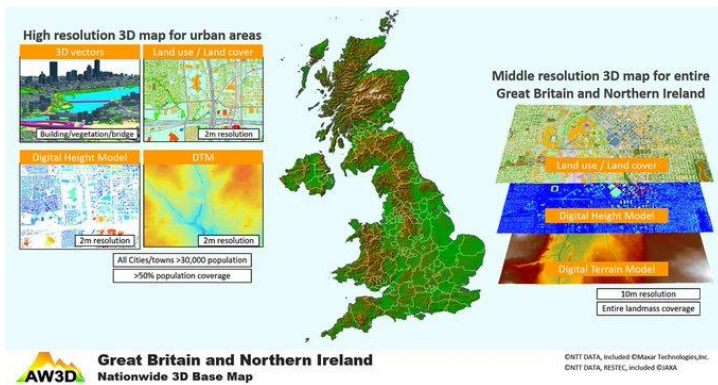
Welcome to the latest edition of the AW3D newsletter.

We're excited to share the latest news, tips, and resource for Geo-Information experts.

Thanks for reading.

-AW3D sales team

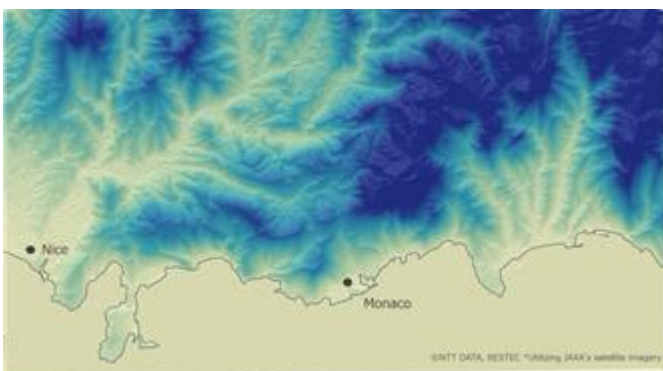
## AW3D News: Off-the-shelf 3D base map of Great Britain and Northern Ireland has been updated!



High-resolution 3D map (3D Vector, DHM / DLU / DTM (2m)) is now expanded to 300 cities/towns reached 30,000 population coverage in Great Britain and Northern Ireland. This dataset is especially ideal for Smart City planners, mobile network operators, and network equipment vendors who need wide-area simulation. Learn more about the dataset:

[Nationwide US/UK/Japan 3D Base map](#)

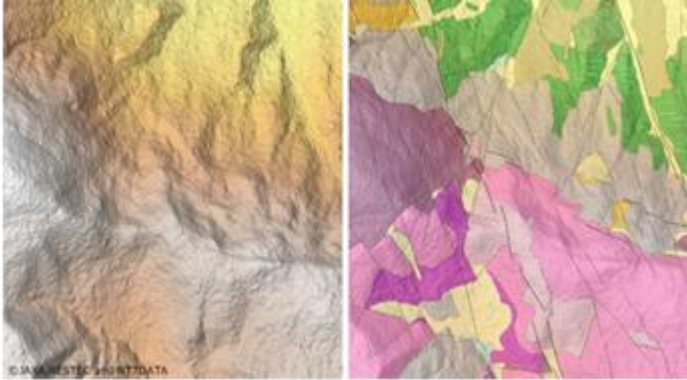
## 3D Map of the Month: Monaco, France - Cote d'Azur on the Mediterranean coast (AW3D Standard 2.5m DSM)



Cote d'Azur on the Mediterranean coast, also known as the Azure Coast. AW3D Standard is the world's best global DEM. More than 3 million satellite images are used to create the most comprehensive high-resolution 3D map available today. Please visit [here](#) for more details.

---

## Case Study: Mapping of geological structures for mining exploration – Worldwide



Mapping the type of geological information with the AW3D DSM data (5m)

For mining companies, it is critical to understand the terrain using accurate digital terrain models in the early phases, followed by site selection, and route design to the site.

Geosense provides value-added data for many mining users who need to understand the structural controls of possible ore bodies or oil/gas fields in the exploration phase. In the exploration phase, the mapping of geological structures with terrain data is often carried out in phases, first a preliminary regional mapping phase, followed by more detailed mapping of a smaller area that is of particular exploration interest.

Geosense had been using free terrain datasets such for the regional mapping phase, such as SRTM and ASTER GDEM, because of a budget issue. Thanks to its accuracy, the reasonable price, and global coverage, Geosense's preferred DSM for the detailed mapping phase is 2.5m/5m resolution AW3D Standard (5m RMSE/7m LE90). Geosense was able to load the AW3D Standard datasets into the GIS software smoothly, create a shade raster from the DSM, and start mapping immediately without large investments that would be required for many competing DSM datasets.

Please visit [here](#) for more details.

---

Any questions, comments, or suggestions are always welcome. We can be reached via [here](#).

Thanks for tuning in,  
The AW3D sales team

---



© AW3D sales team – all rights reserved.

This email was sent from an unmonitored mailbox. If you wish to unsubscribe or change your email address, please click [here](#).

Your privacy is important to us. See [our statement of privacy \(PDF\)](#) to learn how to protect your information