

Off-the-shelf data solution

All data of the Great Britain and Northern Ireland 3D Base Maps have been processed, verified, void-infilled, and error-corrected to support unmatched short lead time. They are provided in industrial-standard formats so that you can directly adapt them to virtually any professional solution.

Seamless, uniform, and consistent

The 3D Base Map has been proven practical and cost-effective through many successful projects thanks to its homogeneity. Our best-in-class manufacturing process chain ensures that you will enjoy reliable high-quality data of a given target area without unwanted gaps and seams.

Users

- ✓ Mobile network operators and network equipment vendors
- ✓ Federal/Central Government
- ✓ Local Government (law enforcement, first responders)
- ✓ Utility companies (water/gas/electricity)
- ✓ Railroad operators
- ✓ Smart city planners
- ✓ Insurance related firms
- ✓ Academia (universities, research institutes)

Typical use cases

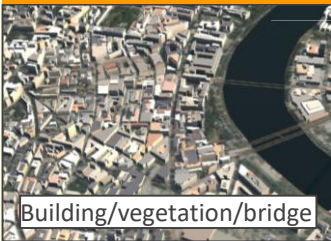
- ✓ RF simulation and wireless network design & planning
- ✓ Long distance wireless communication design
- ✓ Large scale disaster mitigation and management
- ✓ Smart city planning, including wide area green space optimization
- ✓ Environmental Simulations
- ✓ Flight simulator
- ✓ Line-of-site analysis

High-resolution 3D map for urban areas

All Cities/towns >30,000 population

>50% population coverage

3D vectors



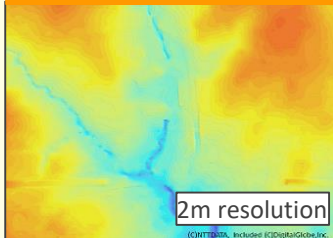
Land use / Land cover



Digital Height Model



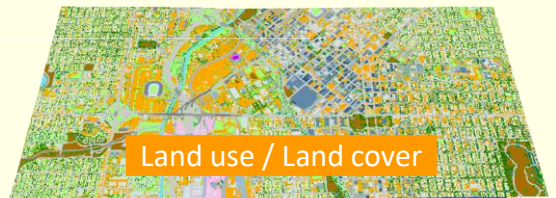
DTM



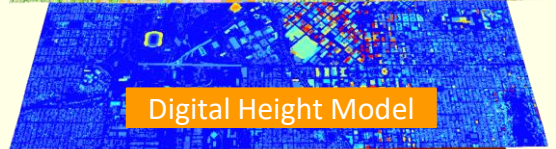
Middle-resolution 3D map for entire Great Britain and Northern Ireland

Entire landmass coverage

Land use / Land cover



Digital Height Model



Digital Terrain Model



10m resolution



Product Specifications

High-resolution 3D map for urban areas

Product layer	3D Vector, DHM / DLU / DTM
Raster resolution	2m
Coverage	Greater London and other 300+ cities/towns in UK *See Appendix below
3D vector layers	Building / vegetation / bridge
DLU classes	25 classes
Horizontal accuracy	2m RMSE
Vertical accuracy	1m - 2m RMSE
Vintage	Greater London: 2021 – 2022, Others: Mainly 2018 – 2022

Middle-resolution 3D map for entire Great Britain and Northern Ireland

Product layer	DHM /DLU / DTM
Resolution	10m
Coverage	The Great Britain and Northern Ireland
DLU classes	26 classes
Horizontal accuracy	10m RMSE
Vertical accuracy	10m RMSE
Vintage	Mainly 2018

Appendix : High-resolution 3D map coverage

Aberdeen	Edinburgh	Newcastle Upon Tyne
Belfast	Glasgow	Northampton
Birmingham	Kingston Upon Hull	Norwich
Bradford	Leeds	Nottingham
Brighton	Leicester	Oxford
Bristol	Liverpool	Sheffield
Cambridge/Milton	London (Greater London)	Slough, and more
Cardiff	Luton	Please contact us for other 300+ cities/towns.
Coventry	Manchester	
Derby	Milton Keynes	

High-resolution 3D map covers over 30,000 population, more than 50% of the population in Great Britain and Northern Ireland.



www.aw3d.jp/en

NTT DATA

NTT DATA Corporation
www.nttdata.com
 aw3d@kits.nttdata.co.jp



Remote Sensing Technology Center of Japan
www.restec.or.jp
 data@restec.or.jp

Product specifications and schedule are subject to change without notice.
 Ver2.0_Oct-01, 2022 ©2022 NTT DATA Corporation, RESTEC