

# AW3D Newsletter vol. 44

April 18<sup>th</sup>, 2023

AW3D team is now joining the 38th Space Symposium in Colorado Springs, CO, U.S. (17-20 April). Please stop by Japan's Space Industry/ JAXA booth (Booth #111) at the Northrop Grumman Exhibit Center-South Hall.

[https://space23.mapyourshow.com/8\\_0/floorplan/?hallID=S&selectedBooth=111](https://space23.mapyourshow.com/8_0/floorplan/?hallID=S&selectedBooth=111)

We are showcasing our extensive range of AW3D products and the latest updates at the event, such as:

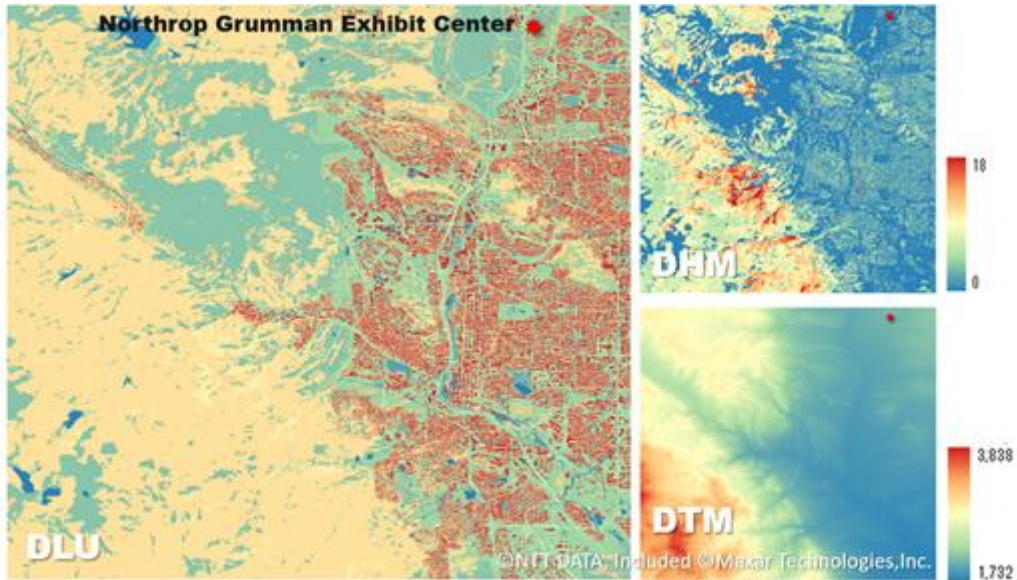
- **AW3D Use Cases:** Utilizing AW3D products in various verticals, including map creation, disaster prevention, power generation plant development, mining exploration, urban planning, etc. (Find more about our use cases here)
- **AW3D Technology:** Introducing our new improved multi-view algorithm enables the creation of high-quality products that fulfill customers' requirements.



-AW3D sales team

---

**3D Map of the Month: Colorado Springs, CO, U.S.**

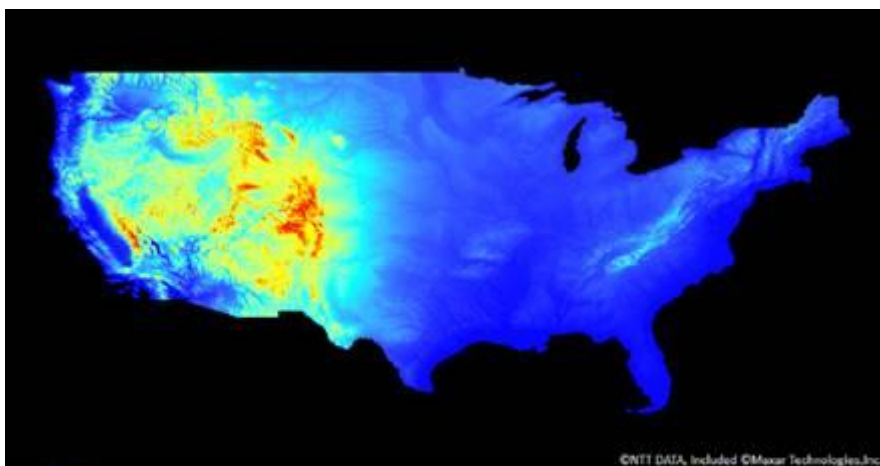


**AW3D** Colorado Springs, USA  
**Nationwide US 3D Base map, DLU/DHM/DTM**

The image above shows the terrain of Colorado Springs, CO, U.S. where the 38th Space Symposium is held. This is a part of our off-the-shelf 3D map for all over Contiguous United States (CONUS) as shown below.

---

**3D Map of the Month: DTM over Contiguous United States (CONUS)**



**AW3D** Contiguous United States (CONUS)  
**AW3D DTM(10m)**

The United States is known as one of the countries that 'open data' of advanced geospatial information is well developed and prepared. However, there is always a challenge in its uniformity when using the data over a wide area, since the data is usually prepared differently by each local government.

AW3D prepares the uniform dataset of Digital Terrain Model (DTM) for Contiguous United States (CONUS) areas as "off-the-shelf" with 10m resolution.

It is suitable for the customers in telecom, utilities, broadcasting & cable TV, railway, and so on, for their businesses, and can be offered in a very short delivery timeline. Please visit [here](#) for more details.

-----  
Any questions, comments, or suggestions are always welcome.  
We can be reached via [here](#).

Thanks for tuning in,

The AW3D sales team  
-----



© AW3D sales team – all rights reserved.

This email was sent from an unmonitored mailbox. If you wish to unsubscribe or change your email address, please click [here](#).

Your privacy is important to us. See [our statement of privacy \(PDF\)](#) to learn how to protect your information.