

18-December 2023

Welcome to the latest edition of the AW3D newsletter.

As we bid farewell to another remarkable year, we are thrilled to present the final edition of our newsletter for 2023! It has been a year filled with growth, achievements, and memorable moments.

This issue highlights three topics curated for your exploration and enjoyment.

Wishing you a happy holiday season and a prosperous New Year!

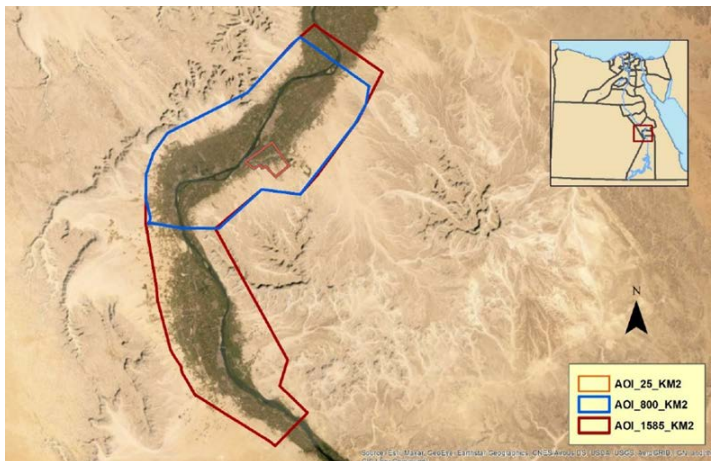
-AW3D team

AW3D News:

1. The Latest Case Study from WFP's Transformative Agricultural Development Initiatives

We're excited to share our latest case study from the [World Food Programme \(WFP\) Egypt](#), a collaboration with the Egyptian government to enhance agricultural productivity in 60 villages in Upper Egypt.

A crucial initiative focused on agricultural land consolidation and irrigation in Boghdadi village, Luxor governorate, along the Nile River. The challenge had been the insufficient and expensive terrain data in rural areas, along with a scarcity of GIS experts.

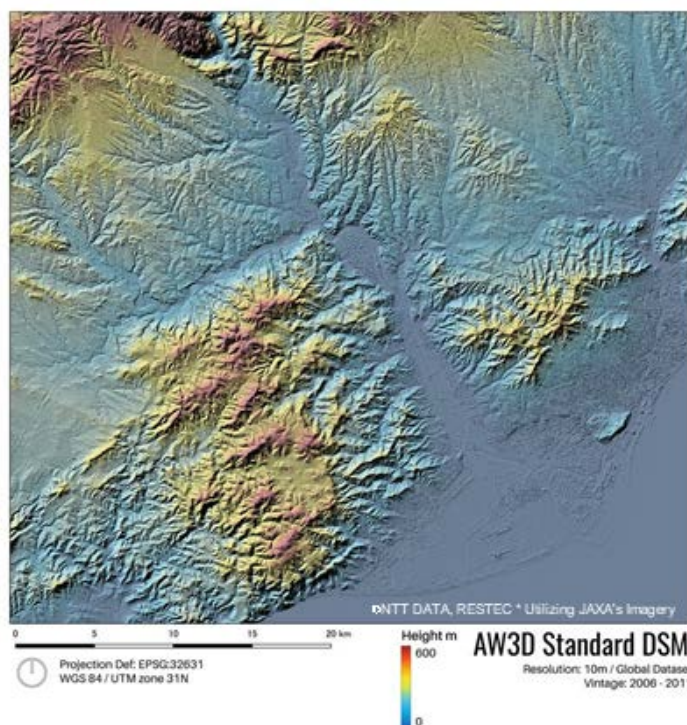


In response to these challenges, WFP Egypt chose AW3D due to its cost-effectiveness, customizability, and capacity-building offerings. AW3D's terrain data played a crucial role in accurately designing irrigation facilities, overcoming the constraints associated with alternative survey methods.....

Explore our website to learn more about how the AW3D product was utilized and contributed to the success of their project [HERE](#):

2. Introducing a New Product – Global Coverage 10m resolution DSM/DTM

We are delighted to announce our latest offerings: the global coverage of AW3D Standard 10-meter resolution Digital Surface Model (DSM) / Digital Terrain Model (DTM) products. These solutions are designed to cater to applications requiring precise terrain information on a global scale.



Here are characteristics of this new product:

- Global Coverage (One-off cost)
- 10m resolution (downsampled from 2.5m native resolution)
- Void infilled/semi-automatic processed

For pricing, delivery terms, and additional details, kindly reach out to us:

<https://www.aw3d.jp/en/contactform/>

AW3D vs. Open/Free DEM

The so-called “Open/Free” Digital Elevation Models (DEM), such as SRTM, FABDEM, and MERIT DEM, are readily accessible, providing a maximum resolution of 30m for global DEMs. The level of details captured by such free dataset seems to be compromised due to limitations in resolution, supplemental data (e.g., mask data to indicate water body), and treatment such as QA/QC and error corrections.

Let’s examine an example compared with FABDEM (Forest And Buildings removed Copernicus DEM), a global DTM designed to eliminate building and tree height biases from the Copernicus GLO 30 DSM. One of the major benefits of this dataset is that it is licensed under a Creative Commons "CC BY-NC-SA 4.0" license, permitting users to freely utilize it for non-commercial purposes.

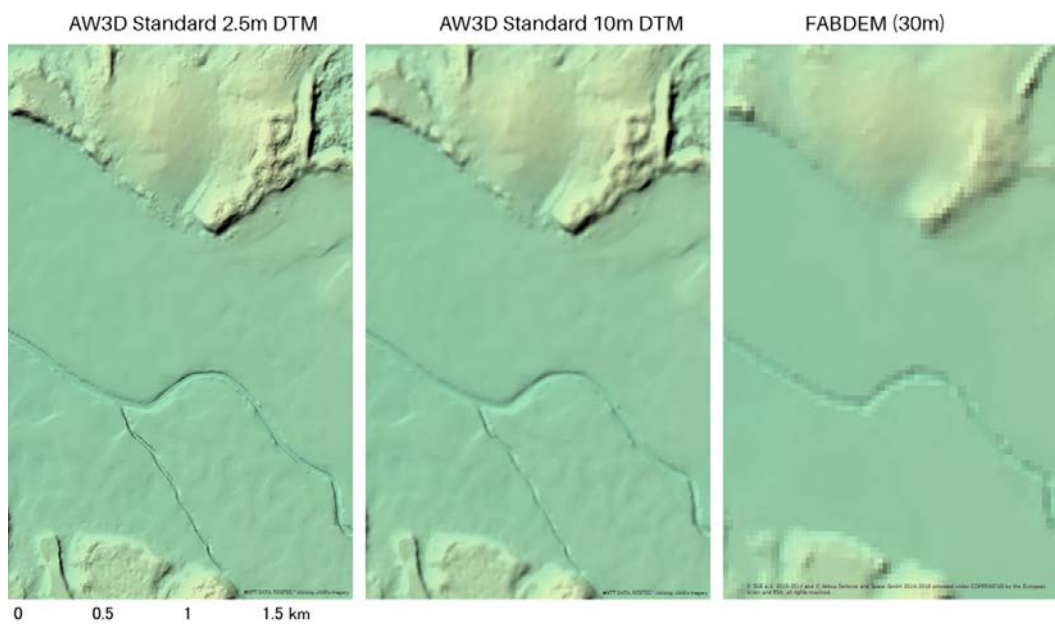


Image: AW3D DTM vs. FABDEM

However, the 30m DEM exhibits limited resolution, resulting in less accurate representations of rivers and undulations.

Conversely, essential features are distinctly visible in the AW3D 10m DTM, highlighting the capability of higher resolution data to capture more intricate terrain details. While the

mentioned limitations can be critical, especially in construction/civil engineering projects and flood simulations, our commercial product, AW3D, mitigates these concerns by offering a diverse range of resolutions, with capabilities extending up to 0.5m resolution.

Additionally, [AW3D Enhanced products](#) can be customized with Ground Control Point (GCP) correction and additional options, guaranteeing alignment with your specific requirements in scenarios where free DEM solutions may lack precision.

3. AW3D Sales Partner Meeting 2023

In mid-November, we hosted a successful sales partner meeting in Tokyo, establishing a platform for incredible collaborations. During the session, we took the opportunity to explore innovative strategies, exchange valuable insights, and strengthen dynamic bonds within our partnership. Our extensive global sales partner network reaches across the world. You can easily connect with our partners here:

<https://www.aw3d.jp/en/contactform/>

We are delighted to facilitate connections with our expert partners in your country or nearby regions!



AW3D Sales Partner Meeting 2023

Any questions, comments, or suggestions are always welcome.

We can be reached via [here](#).

Thanks for tuning in,

The AW3D sales team
