

February 19<sup>th</sup>, 2024

Welcome to the latest edition of the AW3D newsletter.

MWC (Mobile World Congress), an annual trade show dedicated to the mobile communications industry, is set to take place in Barcelona, Spain on 26 - 29 February this year. Leading mobile networking operators worldwide have utilized our AW3D Telecom Dataset to enhance wireless network planning and simulation.

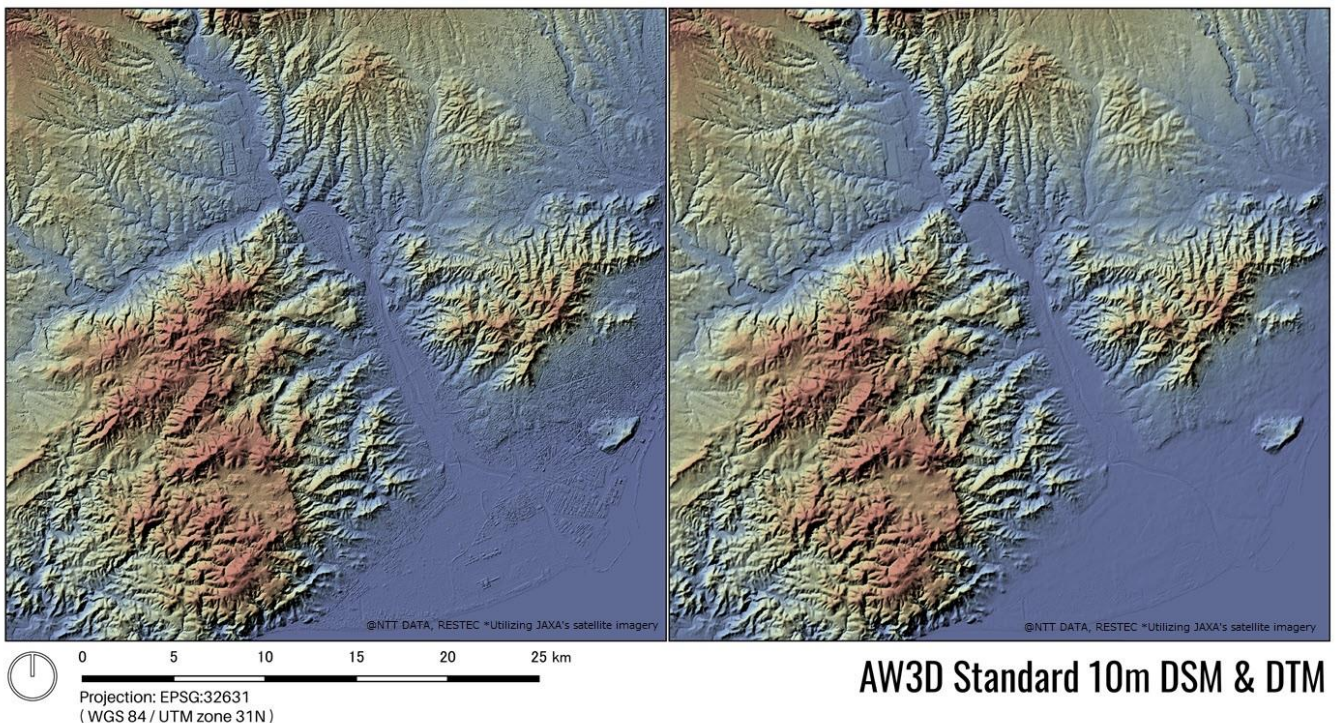
We are excited to bring you the latest updates, valuable insights, and resources for geo-information professionals.

Thanks for reading.

-AW3D team

---

### 3D Map of the Month: AW3D Standard DSM&DTM, Barcelona, Spain



The image above shows the AW3D Standard DSM and DTM, representing the surface and the terrain of Barcelona, Spain where the MWC 2024 (Mobile World Congress) is held. Offering in 2.5m / 5m resolutions,

AW3D Standard DEM, available as off-the-shelf for approx. 90% of the land area, can save time and cost for your project.

---

**Featured article: Rising demands of the wireless network design and enlightening the preparation of digital 3D map – AW3D Telecom**



Specialized website of AW3D Telecom Dataset was published!!

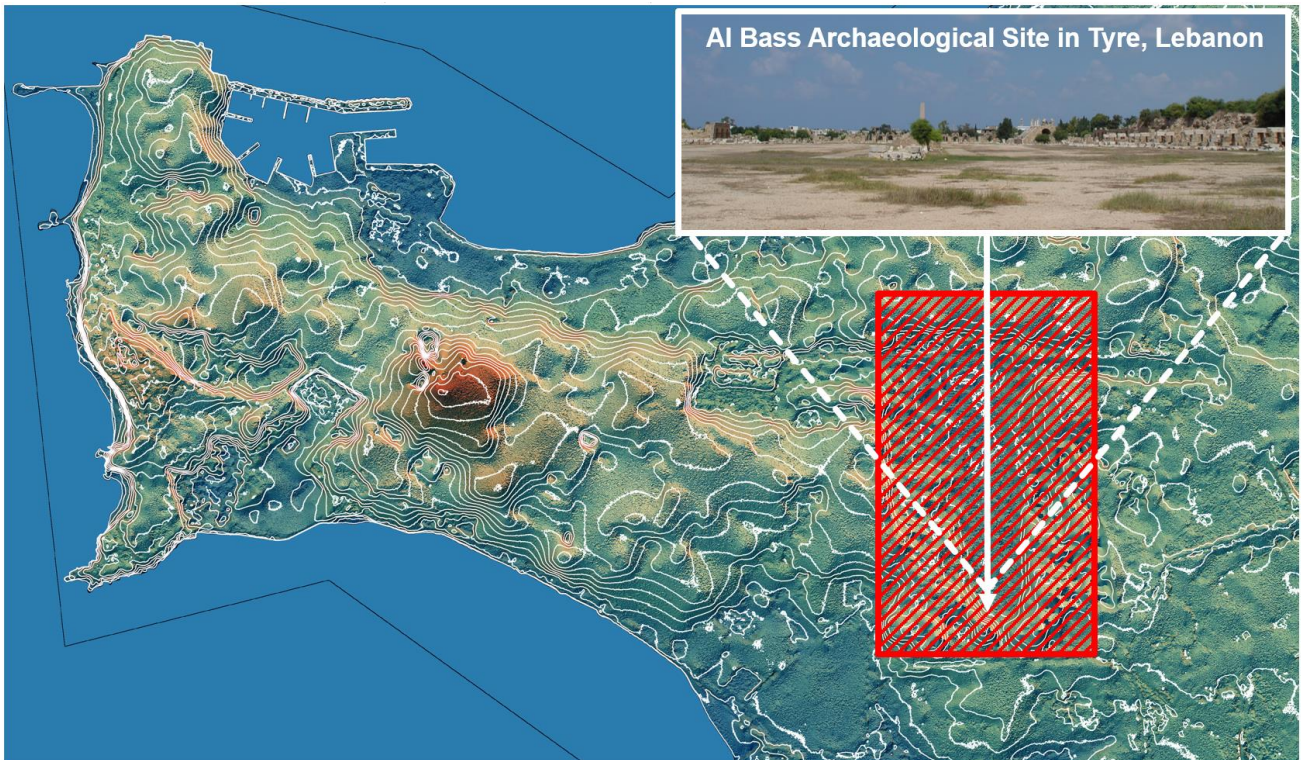
<https://www.aw3d.jp/en/telecom/>

Check out the link above to learn more about the benefits and product lineup of the Telecom Dataset and how it was leveraged by mobile network operators in their wireless network planning and simulation.

---

**Case Study: Archaeological Research of Buried Mausoleums in Conflict Areas – Al Bass site, Tyre, Lebanon**





At Al Bass Archaeological Site in Tyre, Lebanon, a research team undertook a fascinating project: excavating large mausoleums within a depression and exploring subterranean facilities. AW3D Enhanced DTM (0.5m) provided the team with a unique perspective – a detailed terrain overview of the entire site, enabling them to pinpoint key areas with remarkable accuracy thus maximizing their valuable time and resources.

Learn more at:

<https://www.aw3d.jp/en/casestudy/archaeological-research-of-buried-mausoleums-in-conflict-areas-al-bass-site-tyre-lebanon/>

---

Any questions, comments, or suggestions are always welcome. We can be reached via [here](#).

Thanks for tuning in,  
The AW3D sales team

---



© AW3D sales team – all rights reserved.